

HELI合力

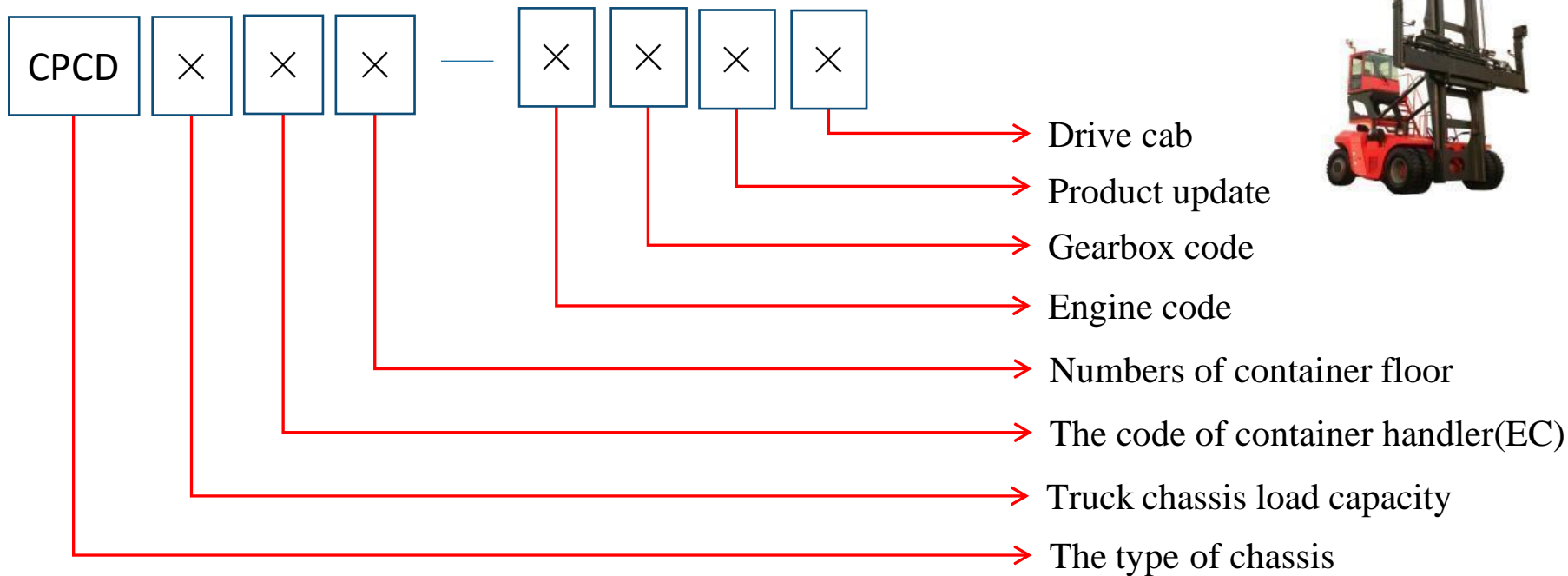


HELI Product Introduction

HELI Heave Truck

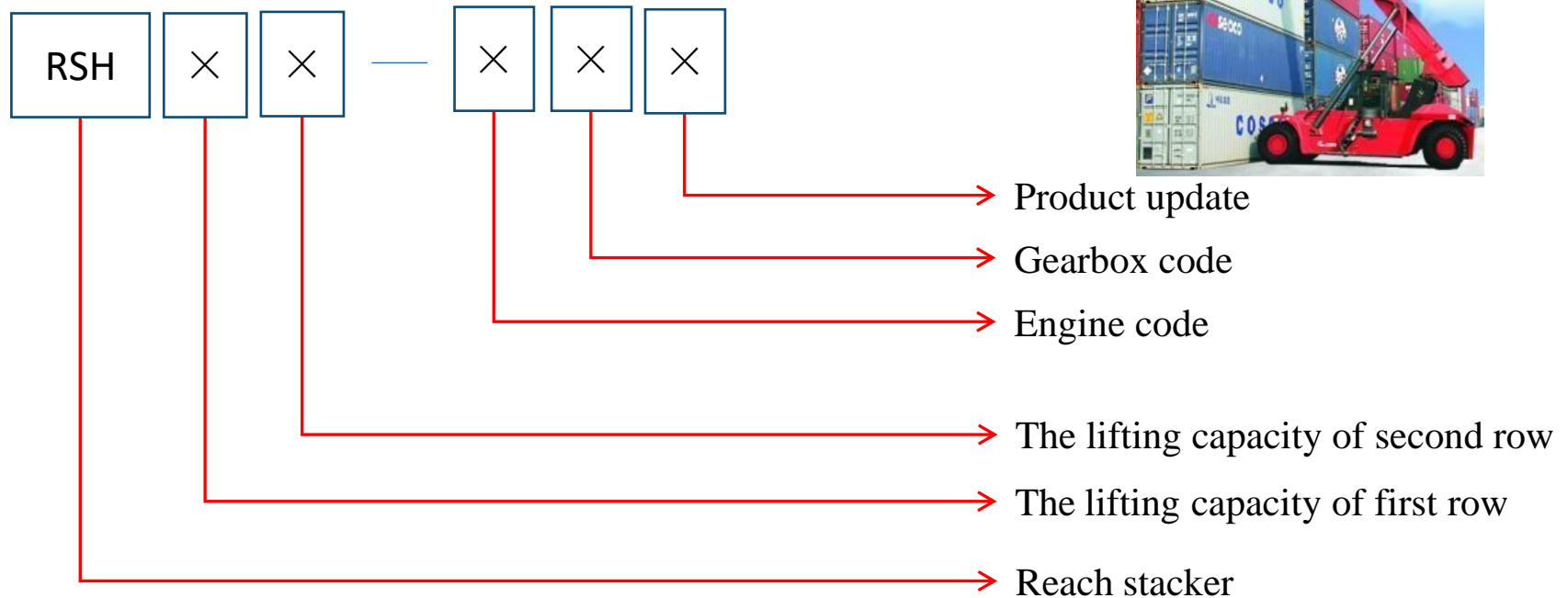


➤ Counterbalance empty container handler



Example: CPCD250EC7-VZG: Based on 25t forklift chassis, empty container handler, 7 container floors, VOLVO engine, ZF gearbox, high position of drive cab.

➤ Reach stacker



Example: RSH4532-VD: Reach stacker, 45t(first row), 32t(second row), Volvo engine, DANA gearbox



General introduction



12~46t forklift



Empty container handle



Reach stacker

Empty container handle



5~6 layer



7~8 layer

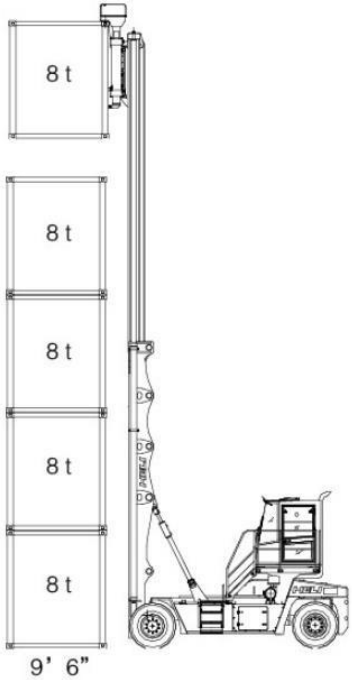
Empty container handle

HELI合力

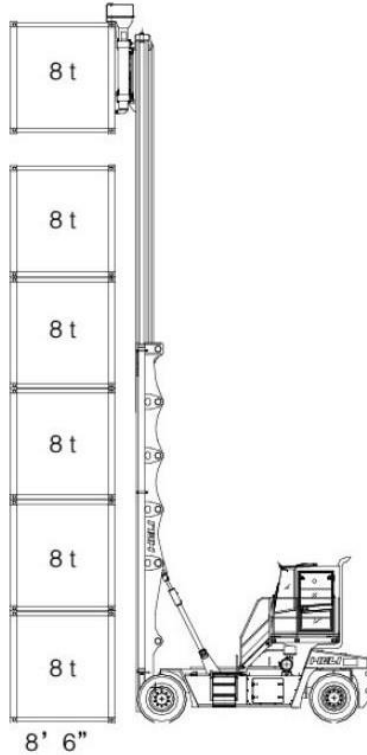
Model	Max handling layers	Container Size(height)	Load center	Gearbox	Service brake	Engine
CPCD180EC5-CZ	5	8'6''/9'6''	1220mm	ZF 3WG171	Wet type brake	Model : Cummins QSB6.7; Rated power : 142KW/2300rpm; Max torque : 929N.m/1500rpm; Cylinder : 6 Displacement : 6.69L Emission : Europe III
CPCD180EC6-CZ	6	8'6''				
CPCD250EC7-VZG2	7	8'6''		ZF 3WG211		Model : VOLVO TAD851VE; Rated power : 185KW/2200rpm; Max torque : 1160N.m/1350rpm; Cylinder : 6 Emission : Europe III,
CPCD250EC8-VZG2	8	8'6''				

Empty container handle

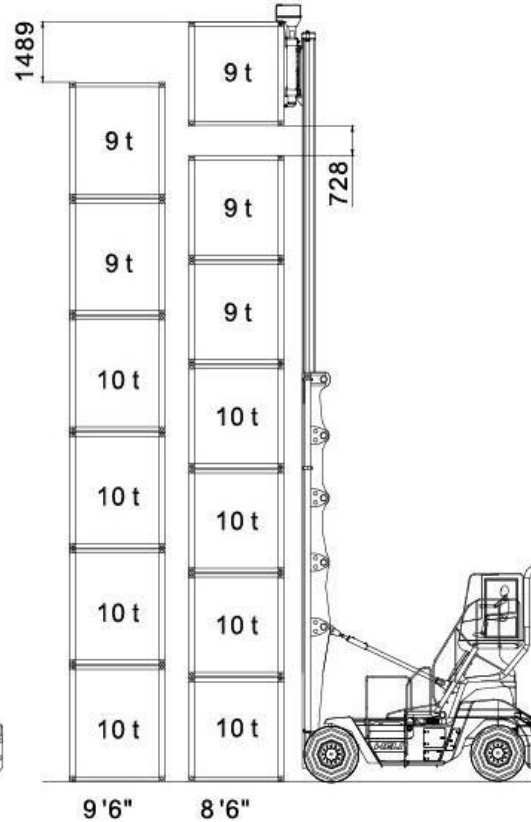
➤ Load capacity chart



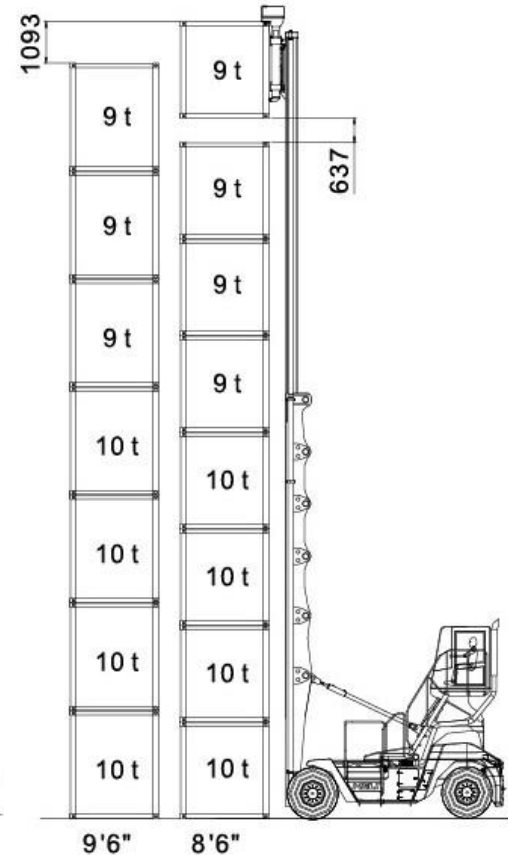
CPCD180EC5-CZ



CPCD180EC6-CZ



CPCD250EC7-VZG2



CPCD250EC8-VZG2

Empty container handle

HELI合力

Standard:

- Elevated driver's cab;
- ELME container Spreader (imported)
- ZF gearbox;
- KESSLER drive axle;
- Parker hydraulic system(imported);
- Wet type brake;
- Air conditioner;
- Reversing radar;
- Pneumatic tire;
- LED light

Optional:

- OPS;
- Centralized lubrication system;



Application of Empty container handle

HELI合力





General introduction



12~46t forklift



Empty container handle



Reach stacker

Reach stacker

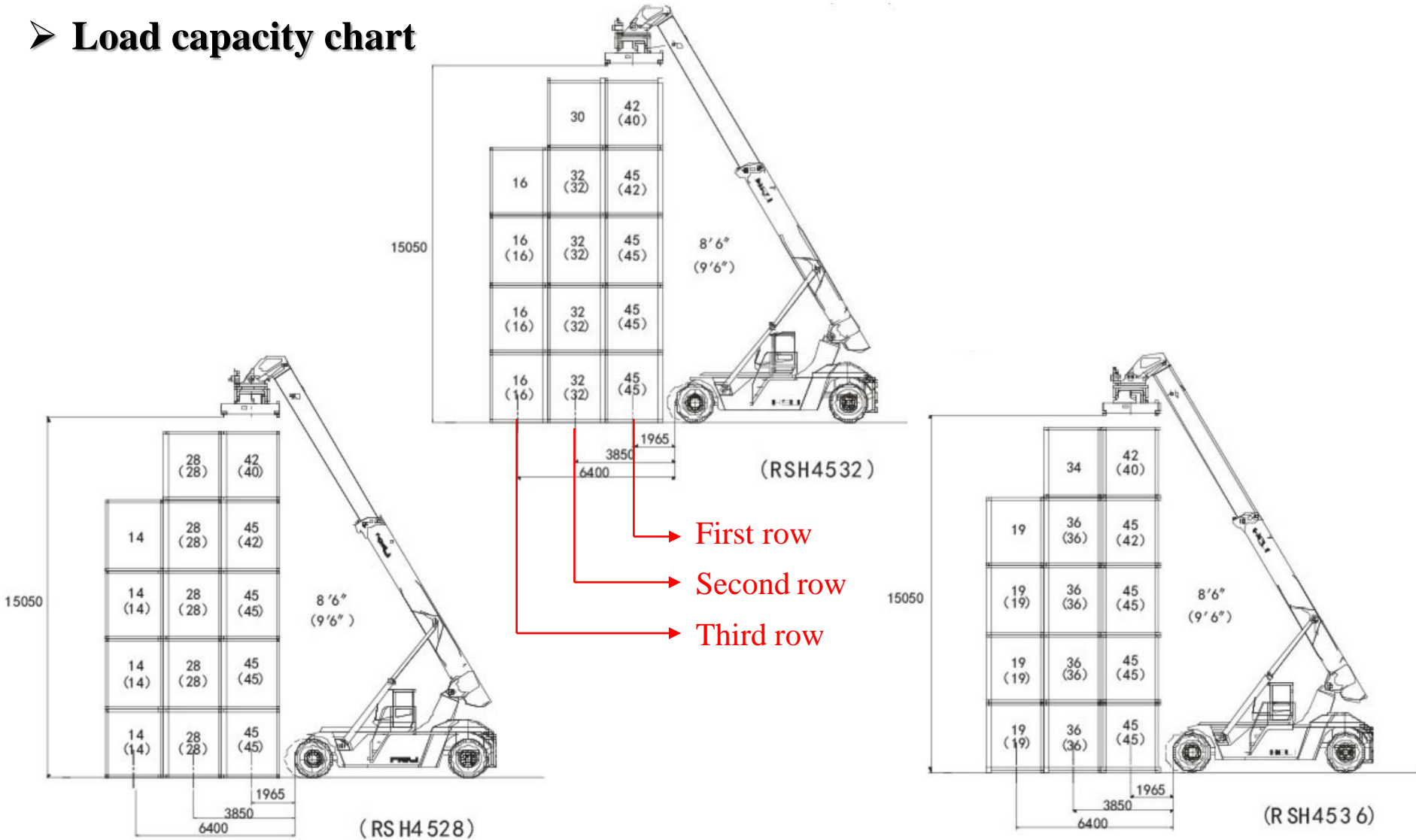


Reach stacker

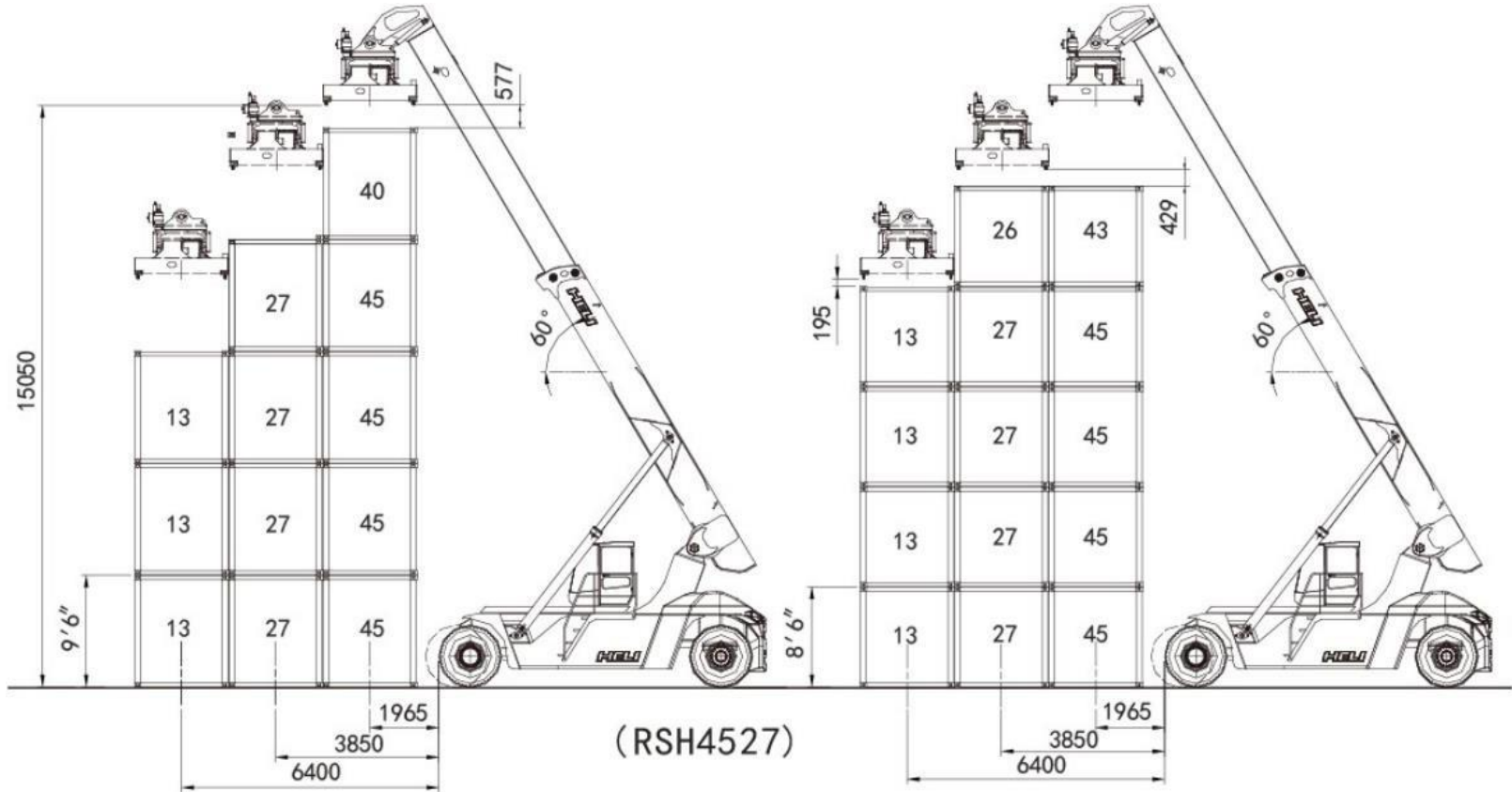
HELI合力

Model	Load capacity (first/second/ third row)	Load center (first/second/ third row)	Wheel base	Gearbox	Service brake	Engine
RSH4528- VO/VO2/CU	45t/28t/14t	1965mm/ 3850mm/ 6400mm	6500mm	DANA TE27	Wet type brake	Model: VOLVO TAD952VE VOLVO 1151VE(VO2); CUMMINS QSM11(CU)
RSH4532- VO/VO2/CU	45t/32t/16t					
RSH4536- VO/VO2/CU	45t/36t/19t					
RSH4527- VO3/VO4/VO5	45t/27t/13t		6000mm	DANA 36000 (VO3/VO5) DANA TE27 (VO4)		Model: VOLVO 1151VE
RSH4531- VO3/VO4/VO5	45t/31t/15t					

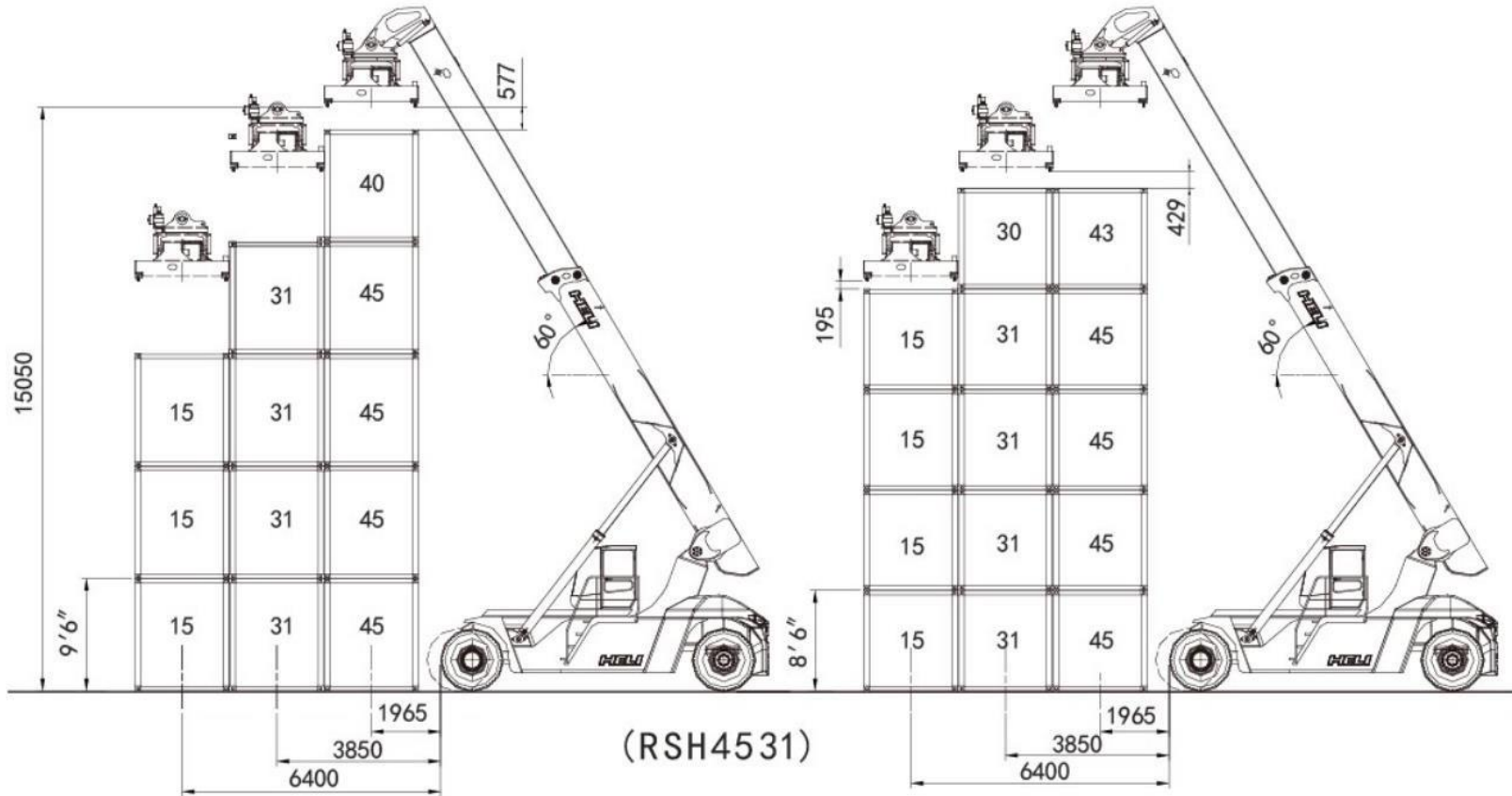
➤ Load capacity chart



➤ Load capacity chart



➤ Load capacity chart



Standard:

- Sliding drives cab;
- ELME container Spreader (imported)
- DANA gearbox;
- KESSLER drive axle;
- Parker hydraulic system(imported);
- Wet type brake;
- Air conditioner;
- Reversing radar;
- Pneumatic tire;
- LED light

Optional:

- GPS vehicle management;
- Centralized lubrication system;
- Automatic lock when spreader catching container.



Application of Reach Stacker



Iran market



Poland market



Brazil market



Venezuela market



Logistics business



Railway station

Application of Reach Stacker

HELI合力



Railway station



TIAN JIN seaport



DA FENG seaport



Automobile industry

WU HU seaport

GUANG ZHOU seaport



HELI合力

Thanks!

PT IFTCO INDO PERKASA

TANGERANG

Jl. KH Hasyim Ashari Kav. DPR Blok C260-261
Nerogtok – Pinang, Tangerang 15145

TEL :0852 2225 5712

www.liftcoindoperkasa.co.id

SURABAYA

Pergudangan Ragam Jemundo. Jl Industri I
Blok B1A, Taman – Sidoarjo

HP/WA : 0822 3441 7102

www.forklift-nusantara.com

